



## MacPherson Robertson Way, Mildenhall, Suffolk, IP28 7RS

**Rent - £1,750 PCM      Deposit - £2,010**

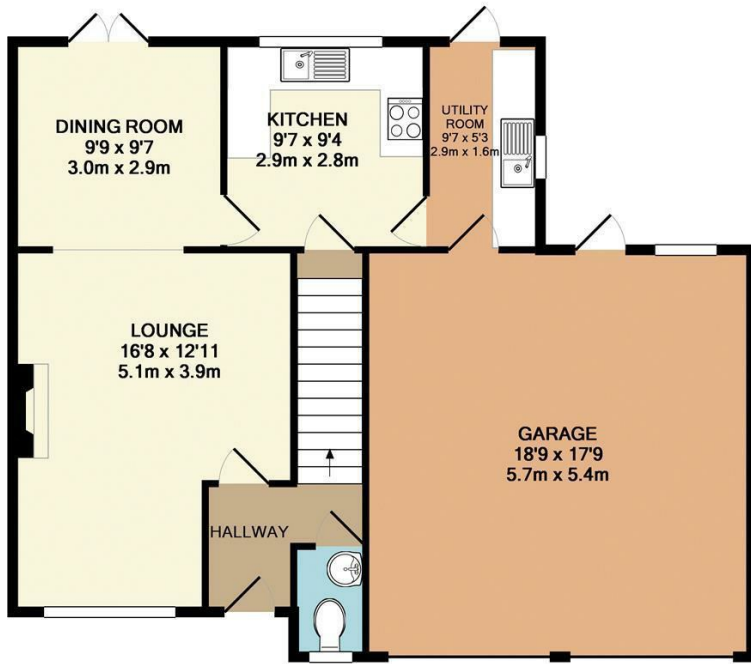
A spacious and well-presented four-bedroom detached home to let on the popular Comet Way development, conveniently located close to RAF bases. This generously sized property offers four good-sized bedrooms, a bright and spacious lounge, a separate dining room ideal for family meals or entertaining, a brand new kitchen, and 2.5 bathrooms. Outside, there's an enclosed rear garden perfect for relaxing, private driveway and the benefit of two garages. A fantastic opportunity to rent a comfortable family home in a sought-after location.

- DETACHED FAMILY HOME
- 4 BEDROOMS
- BRAND NEW KITCHEN
- FAMILY BATHROOM, ENSUITE & CLOAKROOM
- DOUBLE GARAGE, PARKING & ENCLOSED GARDEN
- CLOSE TO RAF BASES
- GAS HEATING & ENERGY RATING - D
- APPROXIMATE SIZE - 1413 SQ FT
- PETS CONSIDERED
- CALL SHIRES TO VIEW

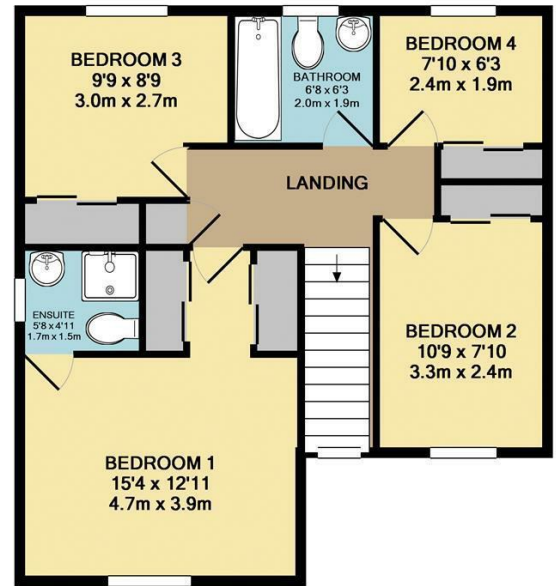


Council Tax Band: E - EPC Rating: D 65





GROUND FLOOR  
APPROX. FLOOR  
AREA 843 SQ.FT.  
(78.3 SQ.M.)



1ST FLOOR  
APPROX. FLOOR  
AREA 570 SQ.FT.  
(53.0 SQ.M.)

TOTAL APPROX. FLOOR AREA 1413 SQ.FT. (131.3 SQ.M.)

Whilst every attempt has been made to ensure the accuracy of the floor plan contained here, measurements of doors, windows, rooms and any other items are approximate and no responsibility is taken for any error, omission, or mis-statement. This plan is for illustrative purposes only and should be used as such by any prospective purchaser. The services, systems and appliances shown have not been tested and no guarantee as to their operability or efficiency can be given

Made with Metropix ©2017

